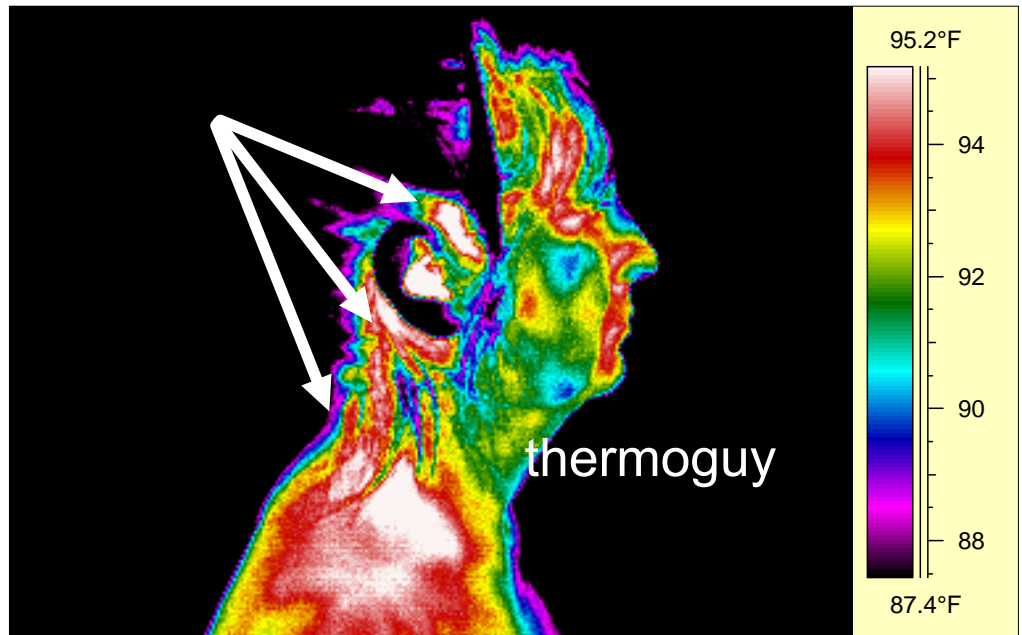


SAM Phantom Model

Specific Absorption Rate (SAR)

Directly above is an example of the test adopted for the limits of human exposure to RF EMFs. Note the position of the cell phone, hole in the top for fluid simulating tissue and temperature probe. It was assumed a localized area was being heated.

Wi-Fi and wireless smart meter exposure were deemed safe 24/7 because the lap top and smart meter weren't held against the head like a cell phone.



Cell Phone Radiation

The SAR model top left is the science adopted for cell phone testing to see if there are adverse health effects. <http://www.ce-mag.com/archive/03/01/miller.html>

As you can see, temperature imaging has evolved and this level of thermography is now lectured in medical education for continuing medical education credits required for ongoing medical licensing.

The SAR test adopted by Health Canada, FCC and other governing bodies does not reflect the safety of wireless technologies. The SAR did not incorporate the antennas, routers or wireless infrastructure EMFs hitting people from head to toe. The SAR test refers to biology but bio-electrical information and vulnerability of humans isn't in their data. They only considered water molecule heating. Mechanisms linking frequencies to adverse health effects was reported to Health Canada.

The infrared images above are of a cell phone sales person denied workers compensation claim for their EMF exposure based on a test model that isn't even applicable. In fact the SAR test is an admission of absorption and harm. With injury or infection there is an inflammatory response, the imaging above shows inflammation and differences not on the other side of the head.