

February 4, 2013

Office of the Secretary
Federal Communications Commission
Washington, DC 20554

Re: Specific Absorption Rate Missing Science, Smart Meters and Advanced Wireless Services

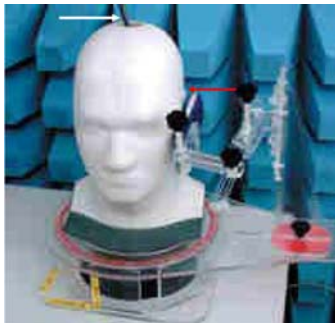
Dear Sir/Madam:

Health Canada's Safety Code 6, the FCC and international governing bodies all use the same science standards for limits of human exposure electromagnetic and radio frequencies (EMF/RF). Unfortunately, science standards and the Safety Code admit to missing the link between the frequencies and adverse health effects.

Please take note that the FCC didn't consider the science linking EMF/RF to adverse health effects was reported by the Canadian Electrical Professionals through Health Canada and by expert witness at the request of the Canadian Parliament's Standing Committee on Health.

Following the reporting of the mechanisms linking the frequencies to adverse health effects, the dangers of wireless frequencies is lectured in the United States for education credits required for ongoing medical licensing. The medical education program is applicable in all 50 states and literally changes the scope of medical diagnosis. Wireless environments have to be considered in medical diagnosis or there is a real risk of misdiagnosis.

The FCC as well as other governing bodies adopted the Specific Absorption Rate to determine the limits of human exposure.

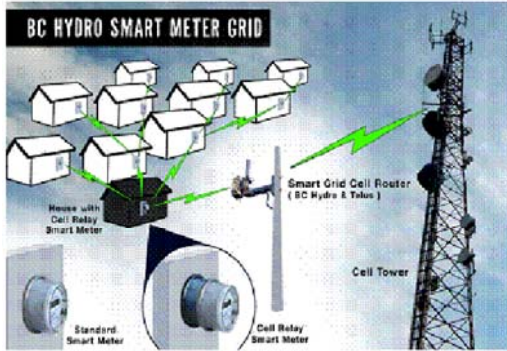


THIS PICTURE SHOWS HOW THE SPECIFIC ABSORPTION RATE IS USED TO DETERMINE EXPOSURE LIMITS. THE RED ARROW SHOWS THE POSITION OF THE CELL PHONE AND THE WHITE ARROW HIGHLIGHTS THE HOLE IN THE TEST MODEL WHERE LIQUID THAT SIMULATES TISSUE IS Poured. THE BLACK WIRE INSIDE THE HEAD IS THE TEMPERATURE PROBE MEASURING FOR HEAT EFFECT. THIS IS THE SCIENCE USED GLOBALLY AND BECAUSE SMART METERS AND/OR WIRELESS COMPUTERS AREN'T HELD AGAINST THE HEAD LIKE A CELL PHONE, 24/7 EXPOSURE IS CONSIDERED SAFE FOR EVERYONE INCLUDING CHILDREN AND PREGNANT WOMEN.

The Specific Absorption Rate calculation only considered the end use device. It didn't include smart meter routers, relays, tower antennas and other wireless infrastructure radiating large geographical areas to communicate with wireless devices. The Specific Absorption Rate didn't incorporate the bio electricity of humans, their vulnerability and left out millions of frequencies in a frequency equation.

When you incorporate the errors or omissions in safety, you have causality, biological plausibility and reproducibility that links the frequencies to adverse health effects.

Directly below is a utility's diagram of the wireless smart grid showing what they didn't incorporate into the Specific Absorption Rate for safety.



PACEMAKER RECIPIENTS ARE TOLD TO STAY OUT OF ELECTROMAGNETIC FIELDS: HOWEVER, THE AREA COVERAGE WILL TAKE THE EMFS DIRECTLY INTO THEIR HOMES. THAT IS A SEPARATE ISSUE FROM UTILITIES USING UNQUALIFIED INSTALLERS WITH A FEW HOURS TRAINING TO SWAP ELECTRICAL METERS. CHANGING A METER UNDER LOAD ON A METER BASE THAT HAS NEVER BEEN SERVICED IS VERY DANGEROUS AND FURTHER COMPROMISES BUILDING OWNERS' PROPERTIES. IN THE CASE OF SMART METER FIRES, UTILITIES BLAME HOME OWNERS FOR THE FIRES BECAUSE THE HOMEOWNER OWNS THE METER BASE WHEN THE ELECTRICAL REALITY IS THE METER SWAP ACTUALLY CAUSED THE FIRE. BELOW IS THE ADDRESS FOR TESTIMONY PROVIDED TO THE TEXAS SENATE COMMITTEE ON SMART METERS.

http://www.thermoguy.com/pdfs/Texas_Senate_Committee_Meeting_on_Smart_Meters.pdf

Municipalities are presently absorbing costs and liabilities that are not theirs to absorb. The FCC, PUC and utility companies are not incorporating health, building or infrastructure costs and haven't even considered the agricultural, forestry, groundwater, fish spawning, economic or ecosystem damage consequences. The frequencies are illegal as applied and the peer-reviewed science substantiating that spans many sciences; electricity, engineering, biology, chemistry and is taught in continuing medical education programs.

Our electrical grid is 60 Hz frequencies and is compatible with our 60 Hz appliances and devices. The radio frequencies at 900 million Hz are not electrically compatible with **any** biological frequencies. Cell tower construction is exceeding land use with antenna frequencies blanketing municipalities and adversely affecting other land use as well as infrastructure.

Residents have valid concerns for themselves and their building investments. The complete science has not been communicated fully to municipalities. My opinion is not singular. The margin of error is zero. The peer-reviewed science qualifying the EMF interactions is called "electricity." To generate electricity requires an electromagnetic field (EMF) and a conductor. With current FCC standards and utility applications, entire areas are being blanketed with EMFs and human/animal, vegetable/mineral kingdom – almost everyone and everything is a conductor.

Health Canada is presently revising Safety Code 6 and has retained the Royal Society as an independent body. The United States has a draft bill H.R. 6358 in which congressional members are asking specifically for a revision of the scientifically deficient Specific Absorption Rate test. I recommend the same approach be applied.

Sincerely,

Curtis Bennett
 Chief Science Officer
 Interprovincial Journeyman Electrician(Red Seal)
 Building Construction Engineering Technologist
 Adjunct Faculty for IHF & GEDI
 33 Year Advanced Thermography Background
www.thermoguy.com/blog
curtis@thermoguy.com
 Ph: 604-239-2694